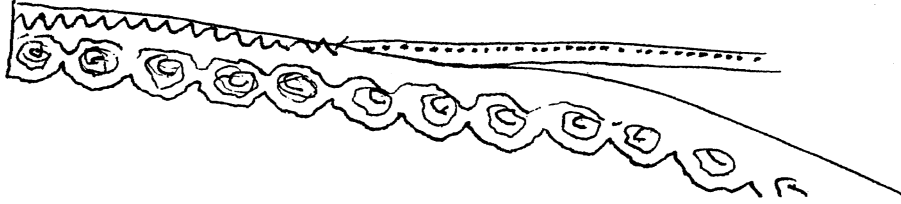


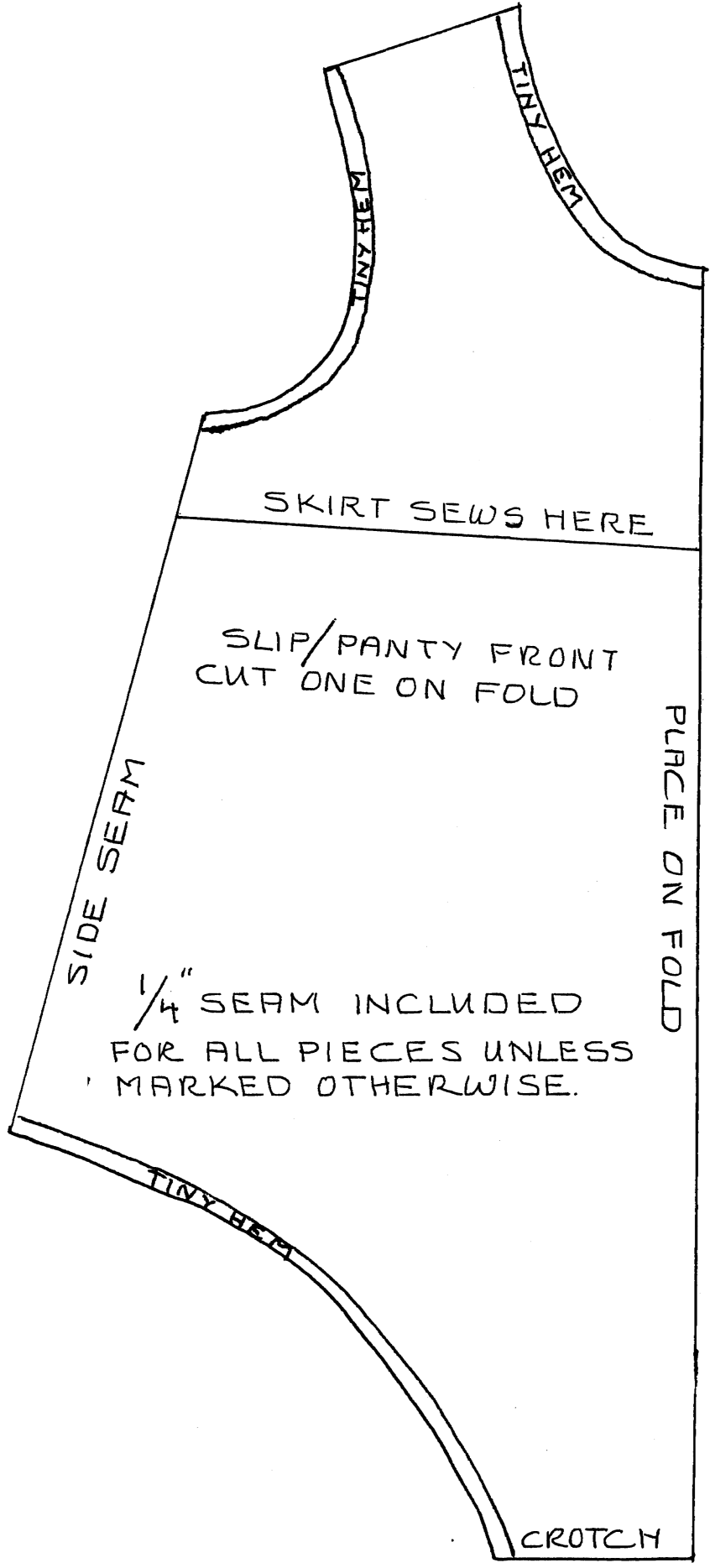
TO PULL THE DIMPLES IN, USE A DOUBLE THREAD ON A LONG NEEDLE. ENTER AT THE TOP BACK OF THE HEAD. EXIT AT A DIMPLE SPOT. RE-ENTER A TINY BIT AWAY FROM WHERE YOU EXITED AND GO OUT THE TOP OF THE HEAD. TIE THE THREAD, PULLING THE DIMPLE IN JUST A LITTLE. REPEAT FOR THE OTHER DIMPLE.

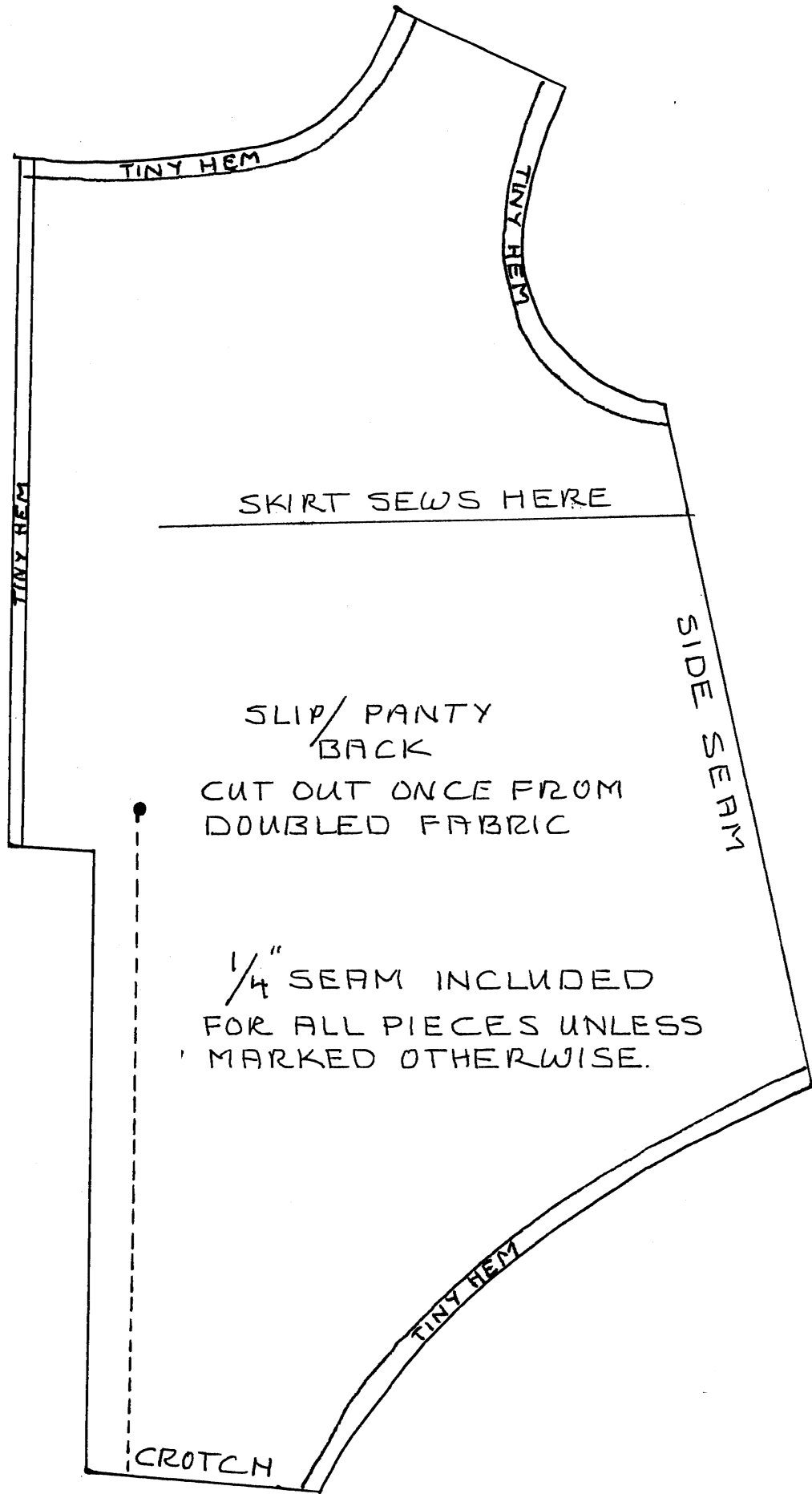
IN THE PAINTING DIRECTIONS, I FORGOT TO HAVE YOU FILL IN THE CENTER OF THE MOUTH WITH WHITE PAINT. LOOK AT THE MOUTH DRAWING TO SEE THE SHAPE THE LIPS SHOULD HAVE. PAINT THE LIPS ONLY WITH THE COLORED PAINT AND IF YOU DID THE GESSO LAYER ON THE WHOLE MOUTH, THE WHITE WILL ALREADY BE THERE TO DEPICT TEETH. IF YOU DIDN'T DO THE GESSO LAYER YOU WILL NEED TO CAREFULLY PAINT WHITE IN THE CENTER OF THE MOUTH.

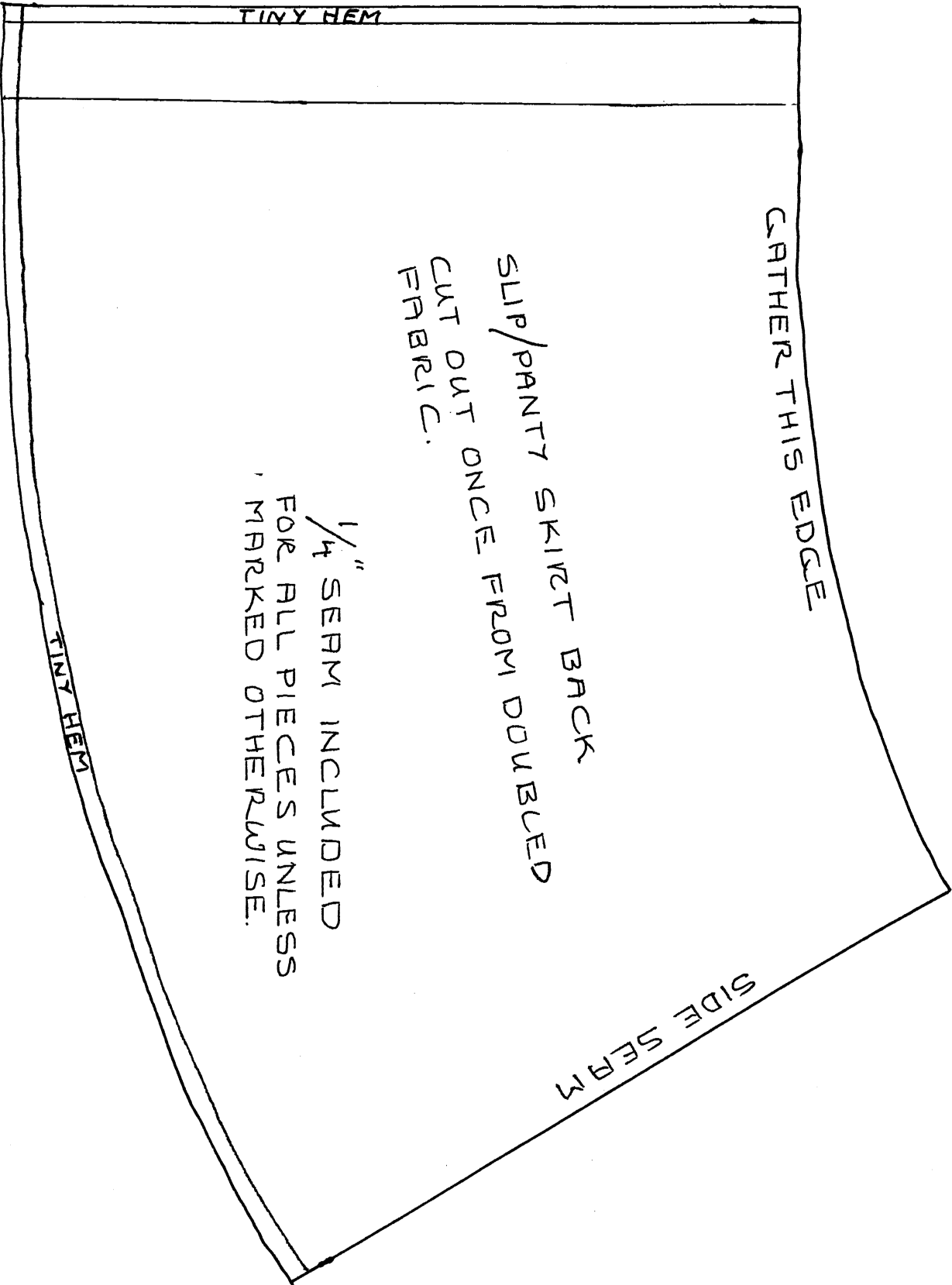
EYE AND MOUTH SHAPE TEMPLATES
SEE DIRECTIONS FOR USE.

ZIG ZAG STITCH LACE OVER
THE TINY HEMS.









GATHER THIS EDGE

SLIP/PANTY SKIRT BACK
CUT OUT ONCE FROM DOUBLED
FABRIC.

1/4" SEPM INCLUDED
FOR ALL PIECES UNLESS
MARKED OTHERWISE.

SIDE SEPM

TINY HEM

TINY HEM