

## Victorian Towels and Bath Set

Text and illustrations by Nanci Jarvis

A Victorian bath set and pretty little towels would complement any dollhouse bathroom. Most materials can be found around the house. For the towels I used collar fabric and trim from a child's dress, and scraps from a lace doily that had holes and stains elsewhere on it. A fancy handkerchief would work, too. The base for the bath set is cardstock. Bath items rest on the thin spongy material from a jewelry gift box.



**7.** Make washcloth from fabric scrap about 1" square. I used an old blouse. Fold scrap in half, then in half again. Glue closed.

**8.** Glue lace to two edges of washcloth.

The rose represents a body scrub sponge. The big metal sea shell (soap dish) was a piece of jewelry that broke. The three pink soaps are real pink shells. Glue them to the soap dish. Glue the pearl (bath softener) into another small shell. A snowflake-shaped plastic bead serves as the bottom of a bubble bath bottle. Glue a fancy, sparkly bead to it to make the top.

**9.** Glue sponge to center of base. Glue soap dish to sponge. Glue other accessories to the base.

**10.** Glue pieces from paper doily to corners of base. ■

*Nanci Jarvis lives in Benton Harbor, Michigan. She became a maker of miniatures after she bought her first dollhouse about eight years ago.*

### Exquisite Soap Pack

#### What You'll Need:

- Pink cardstock
- Fabric rose (craft store)
- Lace scraps (I cut mine from a baby's blouse)
- Paper label (catalogue)
- Beads
- Small sea shells
- Jewelry finding
- Beads: pearl, snowflake shape
- Fabric scrap (1" x 7/8")
- Sponge (thin, from jewelry box)
- Paper doily
- Tacky Glue
- Tulle
- Tiny pink sparkles (Nail Charm)

### Victorian Towels

#### What You'll Need:

- Lightweight white fabric
- Paper ladies (from a catalogue)
- Fabric bow (fabric store)
- Lace scraps from lightweight fabric or doily
- Tiny sparkles (Nail Charms from the dollar store)
- Tacky Glue

**1.** Cut two pieces of white fabric about 1<sup>3</sup>/<sub>8</sub>" x 3<sup>3</sup>/<sub>8</sub>". Cut one piece of white fabric approximately 1<sup>5</sup>/<sub>8</sub>" x 3<sup>7</sup>/<sub>8</sub>".

**2.** Fold edges under 1/8" and glue.

**3.** Cut close to edges of paper lady images. It helps to find images with a white background to best blend into the fabric background.

**4.** Glue image to right side of towel, near bottom edge.

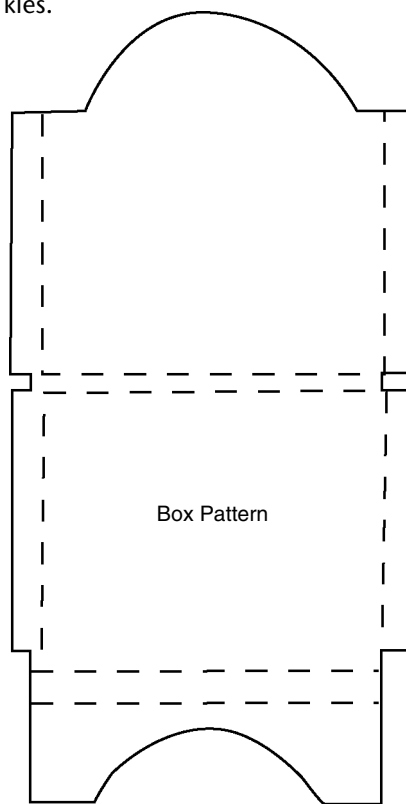
**5.** Embellish bottom edges of small towels with scrap of lace from dress or handkerchief, glued to the backside.

**6.** Glue sparkles to lace.

**7.** Glue a larger scrap of lace to



bottom of larger towel. Embellish with a pre-made bow and sparkles.



**1.** Cut box pattern. Trace onto cardstock and cut out. Fold on dotted lines.

**2.** Glue cardstock tabs to create base. Bend edges of lid forward.

**3.** Cut and glue lace pieces along edges of lid.

**4.** Cut a picture from a fancy catalogue and glue to center of lid.

**5.** Glue tulle over lace on top.

**6.** Glue pink sparkles beneath picture.