

Santa Napkin Holder

Text and drawings by Nancy Rhode

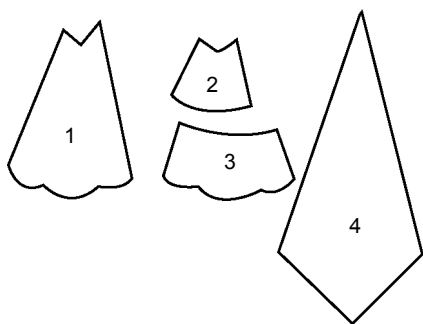


Make a jolly addition to your dollhouse's Christmas dining table, using three scraps of fabric, paint and embellishments.

What You'll Need:

- Cotton fabrics—Red, White and Pink
- Scissors
- Acrylic paint—White, Black
- Toothpick
- White embroidery thread, 6 strands
- White copy paper
- White cardstock
- Tracing paper
- Red seed beads
- Craft glue (Sobo)
- Pencil

1. Cut each pattern from cardstock. Set aside.

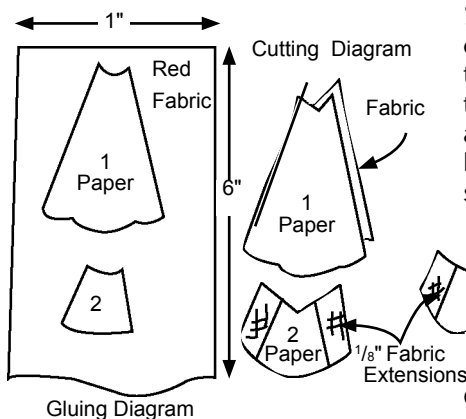


2. Red fabric - cut 1" x 6" strip
Pink fabric - cut 1" x 4"
White fabric - cut 1 1/8" x 6"

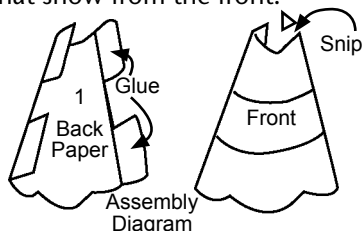
3. For each napkin holder:
Trace patterns #1, 2, and 3 onto paper. Cut out each shape.

4. Spread glue evenly on red fabric. Before glue dries, adhere

paper patterns #1 and #2 to glued side. Repeat with #3 on pink fabric. When dry, cut fabric even with paper on top and bottom edges ONLY (curved and V-shaped). On straight edges cut 1/8" from paper edges on #2 and #3, cutting even with pattern edges of #1.



5. Assembling Napkin Holder: Spread glue carefully on one 1/8" fabric extension on #3. Matching scalloped bottom edges on #1, fold glued extension over edge of #1, gluing it to the back of #1. Repeat for the remaining extension. Glue #2 to top of #1 in same way, matching "V" shaped tops. Snip away any fabric extensions that show from the front.



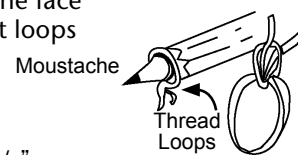
6. Face: Dip point of toothpick in white paint and dot on eyes. Let

dry, then using same point, dip toothpick in black paint and make one dot on scrap paper then onto eye. (This will make the black dot smaller than the white dot.) Glue red bead for nose with hole going sideways, as illustrated.

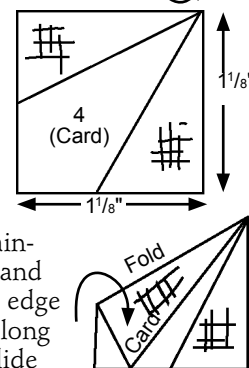


7. Moustache: Pull out one strand of embroidery thread to use as the tie. Wrap the remaining strands around a pencil 2 or 3 times. Slide the loops toward the pencil point and stick both ends of single strand through the loop, then poke the two ends through the single loop just formed and pull tight. Put a drop of glue on this "knot".

Glue the "knot" to the face under the nose. Cut loops at bottom and trim.



8. Napkin: Cut a 1 1/8" square of white fabric. Apply glue to seal edges. Position card pattern #4 so that the bottom edges are even with one bottom corner and the tip is at the opposite corner. Fold both remaining sides over the card and crease. Glue top fabric edge to bottom fabric along long edge. Remove card. Slide napkin into holder.



Nancy Rhode lives in Niceville, Florida.